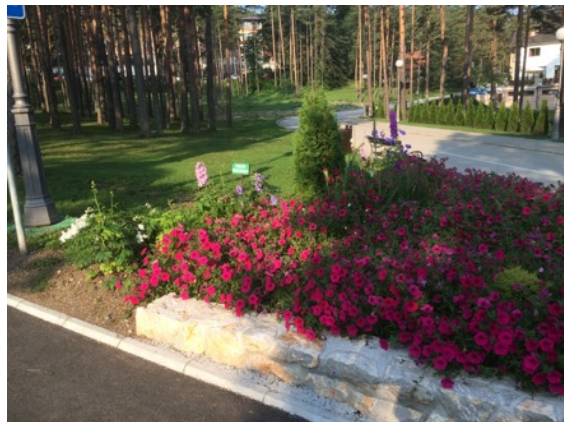


Contour detection: GC method vs Canny operator



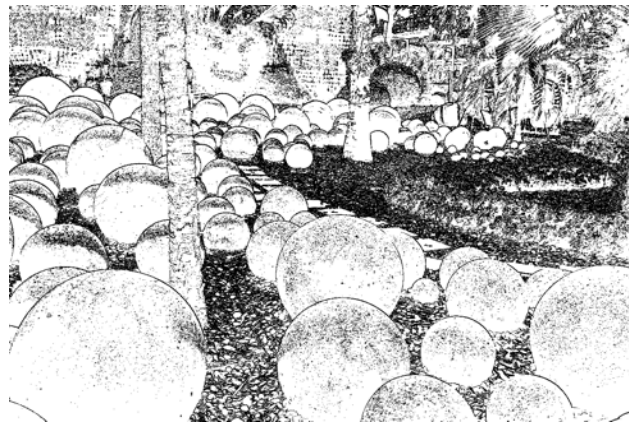
GC method.
Rough contours (h3)



Canny operator



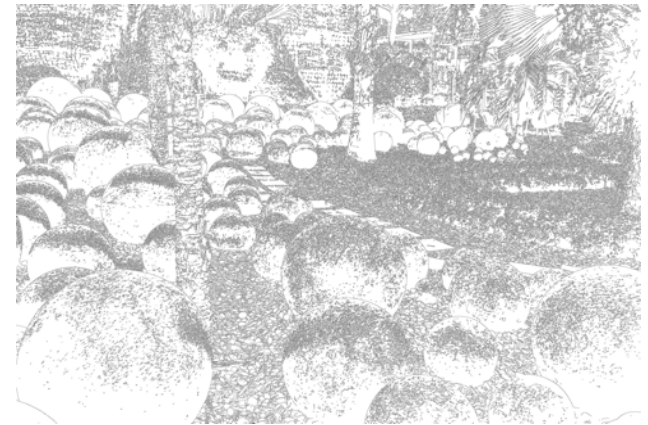
GC method.
Fine contours (h3)



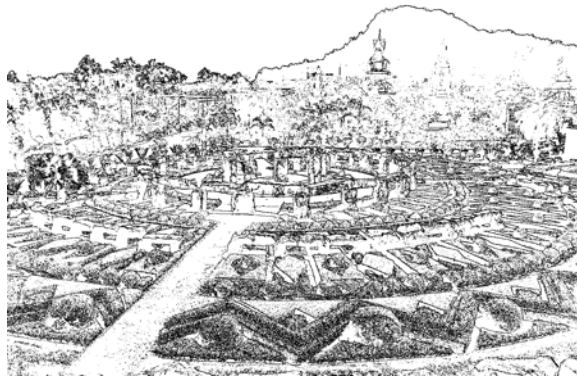
GC method.
Rough contours (h2)



GC method.
Fine contours (h2)



Canny operator



GC method.
Rough contours (h1)



Canny operator



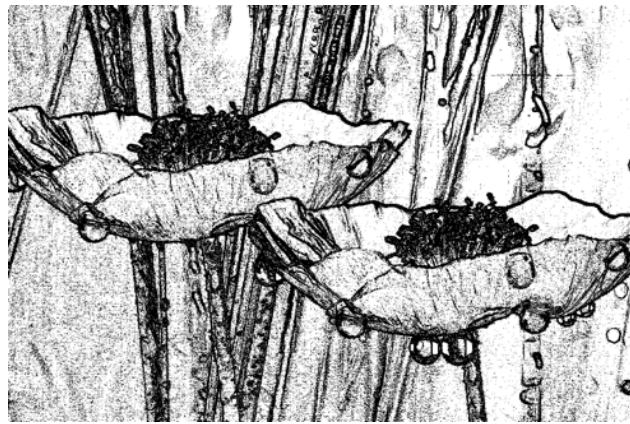
GC method.
Fine contours (h1)



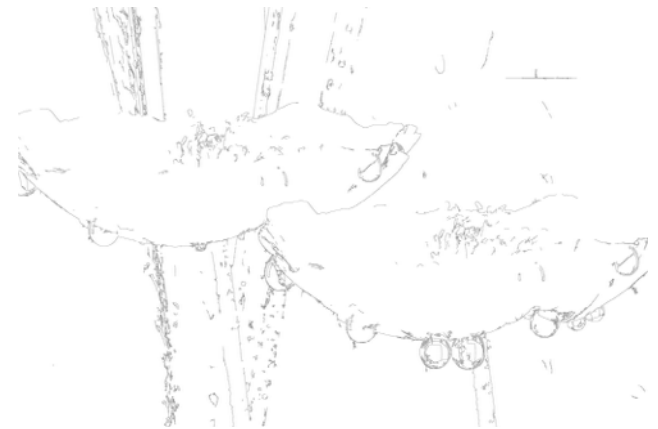


GC method.
Fine contours (h3)

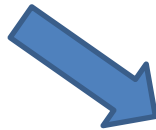
Canny operator



GC method.
Rough contours (h3)

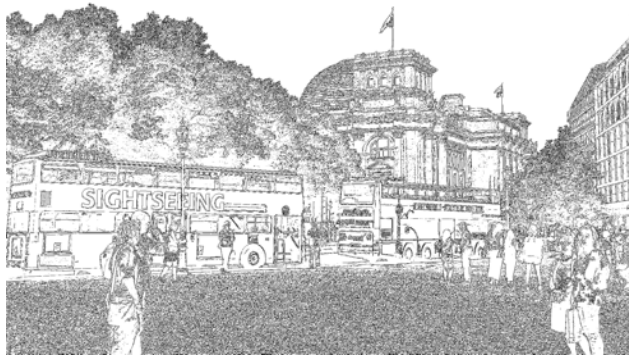


Canny operator



GC method.
Fine contours (h3)

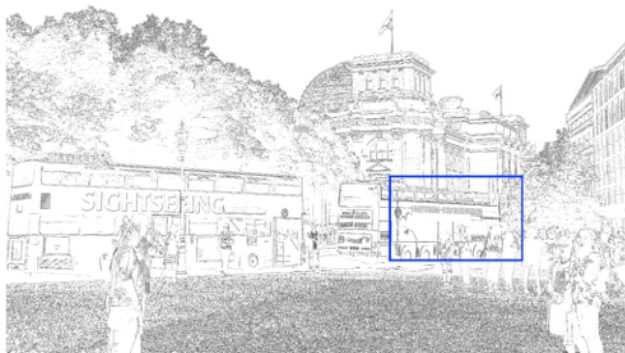




GC method.
Rough contours (f4)



Inscription



GC method.
Fine contours (f4)

